

Installation guide for Secured eCollaboration

The Microsoft SharePoint® add-in installation manual

Last modified 17th of November 2009

Table of content

1. Installing.....	4
1.1 Requirements.....	4
1.2 Installing the Solution Package.....	4
1.3 Uninstalling the Solution Package	5
2. Appendix.....	6
2.1 Using command line to install and uninstall.....	6

© 2009 Cryptzone. All rights reserved

All rights reserved. No parts of this work may be reproduced in any form or by any means – graphic, electronic, or mechanical, including photocopying, recording, taping or information storage and retrieval systems – without written permission of the publisher.

Products that are referred to in this document may be either trademarks and/or registered trademarks of the respective owners. The publisher and the author make no claim to these trademarks.

While every precaution has been taken in editing of this document the publisher and the author assume no responsibility for errors or omissions, or for damages resulting from the use of information contained in this document or from the use of programs and source code that may accompany it. In no event shall the publisher and the author.

Publisher: Cryptzone | Managing Editor: M Jonsson | Technical Editors: A Hansson, M Jonsson

About Secured eCollaboration

Microsoft SharePoint is a web-based document management platform used by organizations throughout the world for sharing and collaborating information. Secured eCollaboration™ is an add-in for Microsoft® SharePoint® which permits endpoint users to directly perform policy-based encryption of documents. Additionally, endpoint users can extend user access rights to encrypted documents, thereby creating a secure environment to share documents with co-workers, business partners and stakeholders while maintaining information security and integrity.

Secure eCollaboration consists of two parts, a SharePoint solution package and the ActiveX component that communicates with the Cryptzone SEP Client. The SharePoint solution package provides the server side encryption page and context menu integration. The ActiveX component provides the check in/checkout logic and linking file encryption functionality. The ActiveX component is installed by the SEP Client during a standard install and no further configuration is needed unless ActiveX components are actively blocked in Windows.

The solution package needs to be manually installed on the SharePoint server, and then published.



1. Installing

1.1 Requirements

- Windows server 2003 or 2008 running Office SharePoint Server 2007 or Windows SharePoint Services 3.0.
- The SharePoint solution package eFileIntgeration.wsp.
- The Solutions package deployment tool, a frontend created by Cryptzone to simplify setup.

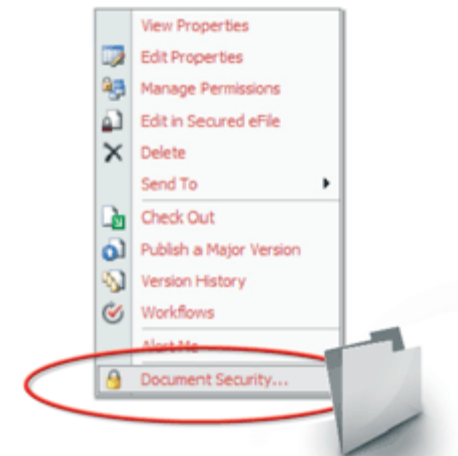
1.2 Installing the Solution Package

1. Login as an administrator to the SharePoint server. (make sure this administrator also have the rights to manage SharePoint)
2. Start the Cryptzone SharePoint deployment tool (SharepointDeploymentTool.exe).
3. Verify that **Path to stsadm.exe:** is correct and pointing to the program file stsadm.exe.
4. Click **Browse...** next to **Path to solution file:** and browse to the solution file "EfileIntgeration.wsp" delivered to you by Cryptzone and click **Open.**

5. In operation

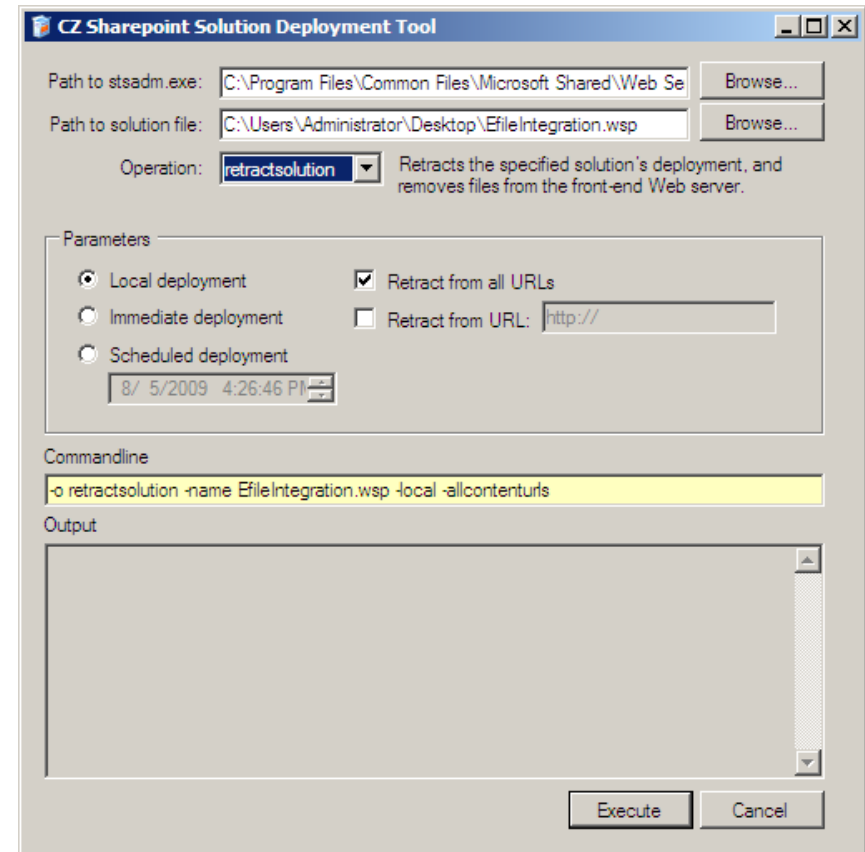
- a. First choose **add solution** and then **execute**, this will add the solution to SharePoint but not publish it.
- b. Second, **choose deploy** solution and then **execute**, this will publish the solution on SharePoint and make it available to the end users.

The solution should now be available on SharePoint. Verify by opening a drop down menu in a document list (left click on the row, not the document) a Document Security option should be available in the context menu as in the picture below.



1.3 Uninstalling the Solution Package

1. Login as an administrator on the SharePoint server
2. Start the Cryptzone SharePoint deployment tool (SharepointDeploymentTool.exe).
3. Verify that **Path to stsadm.exe:** is correct and pointing to the program file stsadm.exe.
4. Click **Browse...** next to **Path to solution file:** and browse to the solution file "EfileIntegration.wsp" delivered to you by Cryptzone and click **Open.**
5. In operation
 - a. First choose **retract solution** and then **execute**, this action will revoke the solution from SharePoint.
 - b. Secondly choose **delete solution** and then **execute**. This action will delete the solution from SharePoint.



2. Appendix

2.1 Using command line to install and uninstall

The Cryptzone deployment tool is an interface to **stsadm.exe** which is a command line tool to perform advanced operations on SharePoint. The actions explained in this manual can be performed using the stsadm.exe command line.

For full reference of **stsadm.exe** see: <https://technet.microsoft.com/en-us/library/cc288413.aspx>

Install using command line

The instruction <solutionfile> in the command lines below shall be replaced with the file name (EfileIntegration.wsp) and its location.

Add to server

```
"C:\Program Files\Common Files\Microsoft Shared\Web Server Extensions\12\bin\stsadm.exe" -o addsolution -filename <solution file>
```

Publish

```
"C:\Program Files\Common Files\Microsoft Shared\Web Server Extensions\12\bin\stsadm.exe" -o deploysolution -name <solution file> -local -allowgacdeployment -allcontenturls
```

Uninstall using command line

```
Revoke publication "C:\Program Files\Common Files\Microsoft Shared\Web Server Extensions\12\bin\stsadm.exe" -o retractsolution -name <solution file> -local -allcontenturls
```

Delete from SharePoint

```
"C:\Program Files\Common Files\Microsoft Shared\Web Server Extensions\12\bin\stsadm.exe" -o deletesolution -name <solution file>
```