



# NETconsent Informer

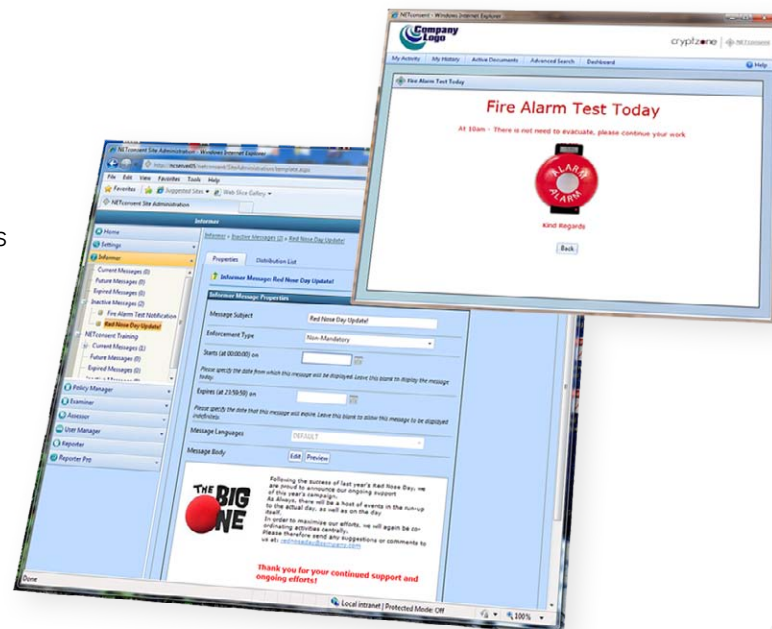
Disseminate information on a need-to-know basis

## Benefits

- Pro-active notification of essential information
- Display only relevant and current information
- Enhance worker productivity
- Reduce unnecessary internal email traffic
- Lower data storage and management requirements
- Improve organisational efficiency
- Improve staff morale

## Features

- Direct communications with intended audience
- Users required to read essential information
- Time critical messages only displayed for appropriate duration
- Record of viewing retained for compliance
- Delegated management of communications
- Straight-forward report generation



NETconsent Informer from Cryptzone enables organizations to simplify communications, thus delivering improved productivity and awareness whilst reducing cost.

Internal communications, such as announcements and other important broadcast messages are a critical operational component, assisting the enterprise to achieve organisational and departmental goals. NETconsent Informer ensures that users only receive relevant informative notices during their valid time period, thereby reducing information overload.

Information overload often causes important communications to be overlooked which can lead to operational inefficiencies.

## Create

Authorised users can quickly and simply generate announcements by typing directly into the WYSIWYG editor, or importing pre-existing Microsoft Word documents.

## Distribute

Informer messages may be distributed to the entire organisation or specific group(s) of users, subject to the content of the message.

Dates may be set for the start and expiry of each notice ensuring that people only receive information during the valid lifetime of the communication.

## Present

When someone returns from vacation, new and valid Informer Messages are displayed. After a user has opened a message, it is available for reference via the NETconsent user portal but will not be highlighted as 'New'.

When someone returns from vacation, this ensures that their inbox will not be full of communications about events that happened in their absence, and are hence totally irrelevant.

## Competencies

Although questions are linked directly to policies, questions can also be aligned to a competency framework. This enables management to generate reports across specified or all tests to provide skills gap analysis, thereby identifying potential training needs.

## Report

Reports can be quickly generated to clearly show the status of Informer messages as well as identifying how many users have actually seen a specific Informer message.

## Typical Uses

- **Help Desk** to communicate operational issues together with their resolution
- **Health & Safety** announcements to efficiently inform staff of potential hazards
- **General Administration** for the day-to-day messages that keep staff up to date with what's going on
- The **"CEO Message"** that ensures everyone clearly understands the company's main drivers
- **Call Centre** communications sending out today's "hotspots" and "special offers"
- **Pre-notification of NETconsent deployment**

The image shows two screenshots of the Informer system. The top screenshot is the 'Informer' web interface, displaying a list of messages with columns for Subject, Start/End times, Action, Set Status, and Delete. The bottom screenshot is the 'LANconsent Kiosk' interface, showing a list of documents with columns for Title, Action, and Deadline.

Subject	Starts (at 00:00:00) on	Expires (at 23:59:59) on	Action	Set Status	Delete
Fire Alarm Test TODAY!			[Icon]	[Icon]	[Icon]
Company Intranet			[Icon]	[Icon]	[Icon]
New Paternity Leave Policy Announcement			[Icon]	[Icon]	[Icon]

Title	Action	Deadline
Anti Money Laundering	Read	Immediately
Red Nose Day update!	Read	
Fire Alarm Test Today	Read	



Cryptzone solutions mitigate information security risks in the key areas of Policy Compliance, Content Security, Secure Access and Endpoint Security.

### International Headquarters

Cryptzone Group AB  
Drakegatan 7,  
SE-412 50 Gothenburg,  
Sweden

[www.cryptzone.com](http://www.cryptzone.com)  
[info@cryptzone.com](mailto:info@cryptzone.com)

### Regional Offices

Sweden  
Tel: +46 (0)31 773 86 00

United States  
Tel: +1.949.279.6177

United Kingdom  
Tel: +44 (0)370 013 1600

### Partner information:

For more information go to  
[www.cryptzone.com/partners](http://www.cryptzone.com/partners)